

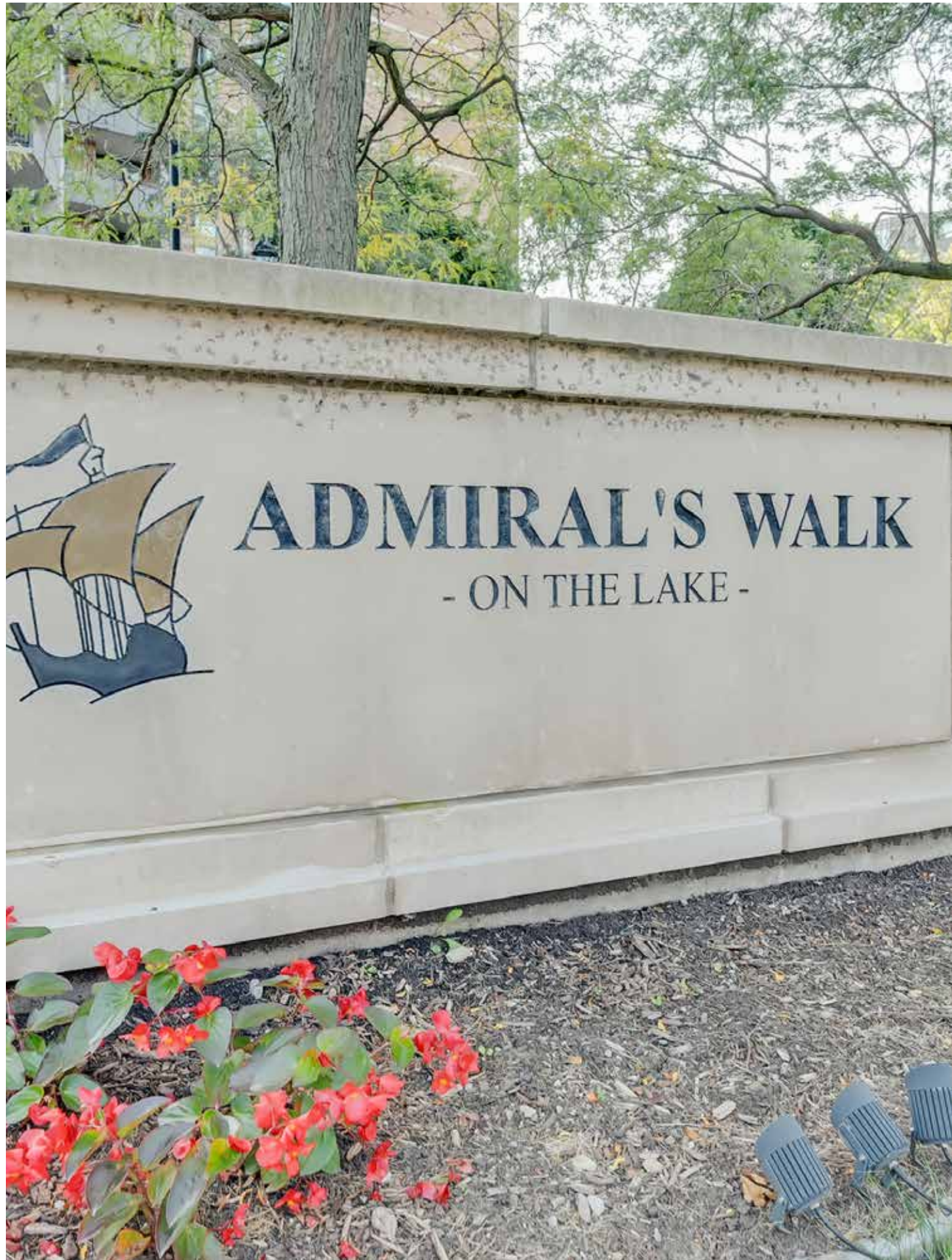
1907-5250 LAKESHORE ROAD

burlington | ontario



m i c h a e l B R E J N I K
sales representative

ROYAL LEPAGE
BURLOAK REAL ESTATE SERVICES
INDEPENDENTLY OWNED & OPERATED BROKERAGE

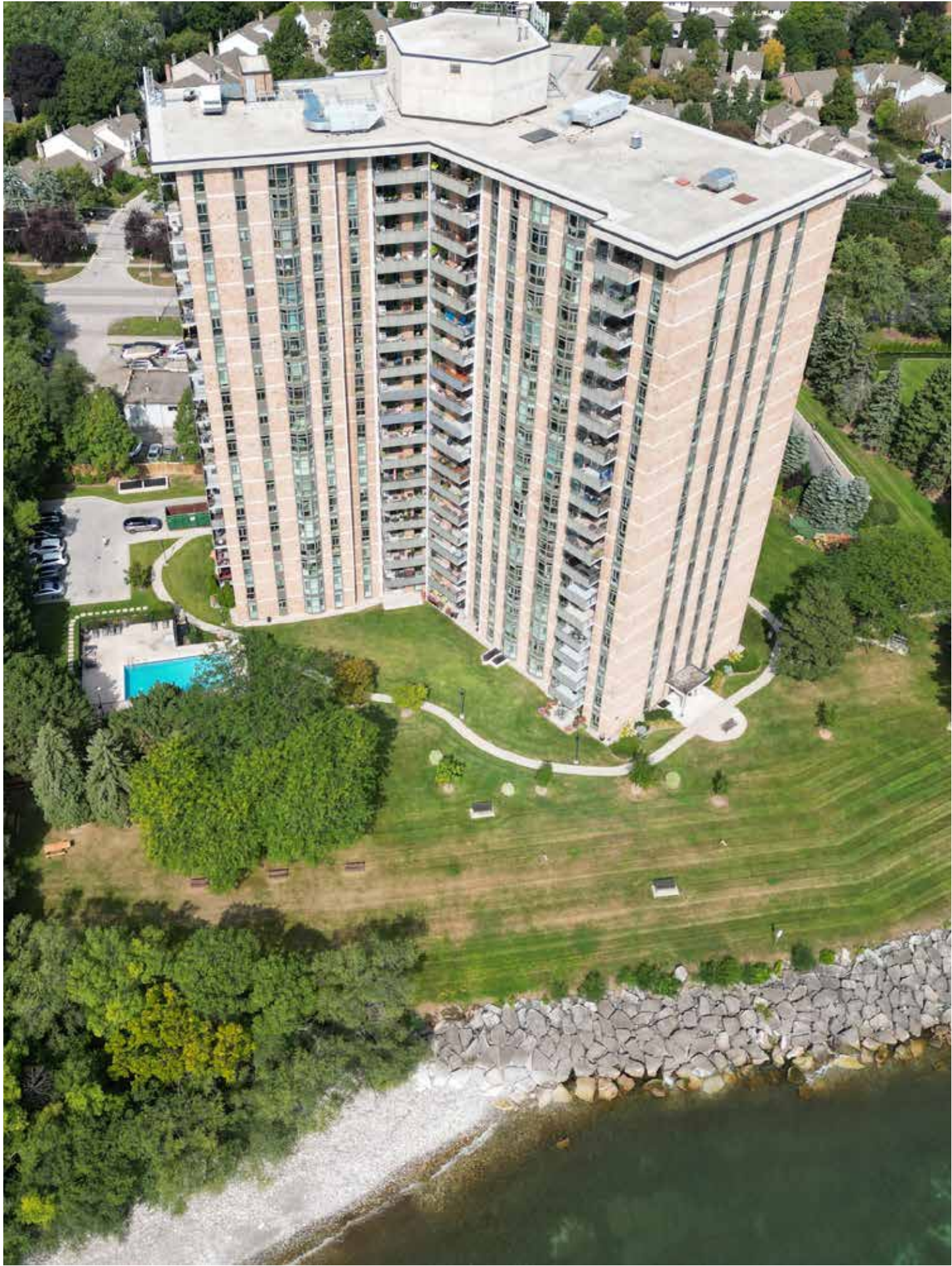












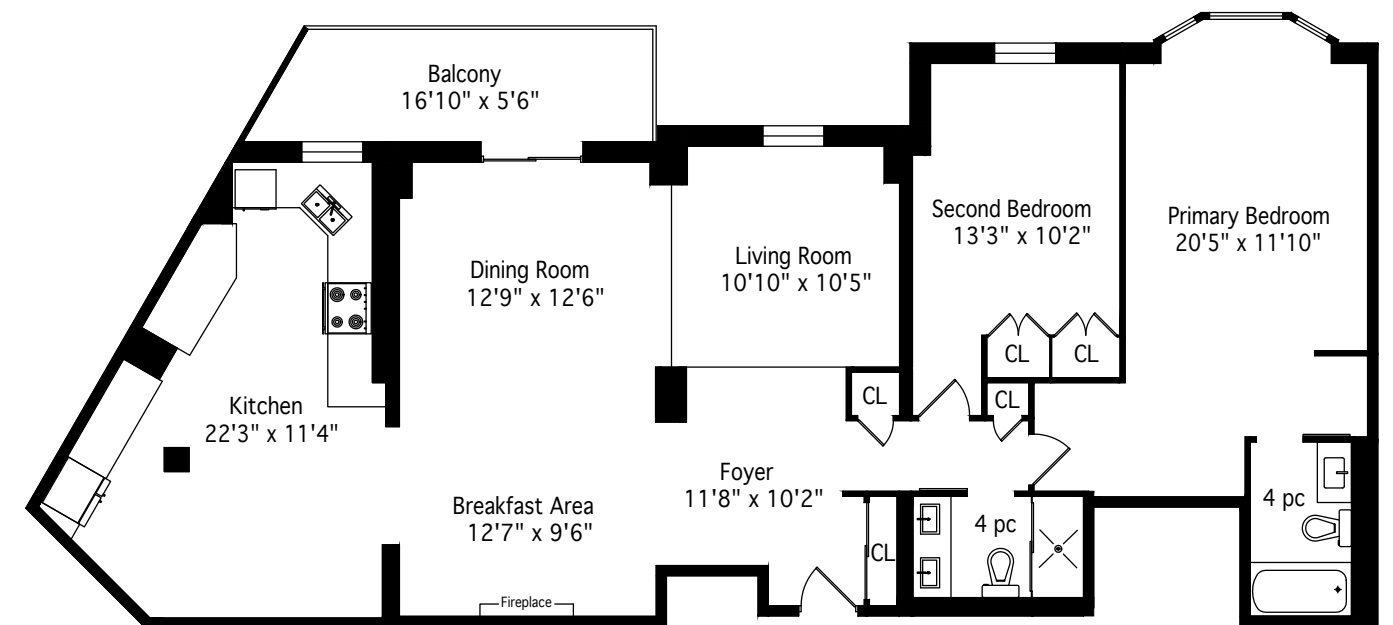
FEATURE DETAILS

Bedrooms	Bathrooms	Square Footage	Taxes	Condo fees
2	2	1500	\$2954.75 for 2023	\$1,110.04/month

- Front hall closet with glass front sliding doors
- Laminate flooring
- Kitchen features quartz counter tops, stainless steel appliances, built in hidden washer and dryer, dining area with upgraded light fixture, custom backsplash, custom cabinetry, undermount sink, LED pot lights and ceiling fan
- Living/dining area features laminate flooring, stone accent wall with electric fireplace, walkout to the balcony
- Sunken den with ceiling fan and remote blinds
- Spacious Primary suite with built in closets and drawers with organizers, ceiling fan, a remote-control blind, and a four-piece ensuite bath
- Four-piece ensuite bath with quartz top vanity with undermount sink, LED pot lights, and a modern glass barn door

- Second bedroom with ceiling fan, double sized closet with organizers, and a remote-control blind
- Main bath with double vanity with quartz countertops, undermount sinks, LED pot lights, custom mirror, and a glass shower with a rain head and hand held.
- Amenities include an outdoor pool, gym with available exercise classes, games room, party room that can accommodate two separate parties, workshop, car wash, men's and woman's washrooms with lockers and sauna, and a spacious lobby that is scheduled to be updated
- Hallways have all been updated
- One parking space on P2 # 114 (a second space is being rented for 50.00 per month which can continue if needed)
- One large locker on level P2, room F

1907-5250 Lakeshore Road
1500 Square Feet



MICHAEL BREJNIK | SALES REPRESENTATIVE I
ROYAL LEPAGE BURLOAK REAL ESTATE SERVICES I
OFFICE: 905.335.3042

Measurements and Calculations are approximate. To be used as guidelines only

m i c h a e l B R E J N I K



ROYAL LEPAGE
CHAIRMAN'S
CLUB
NATIONAL
TOP 1%



WHO'S WHO IN
LUXURY
REAL ESTATE.



m i c h a e l B R E J N I K . c a