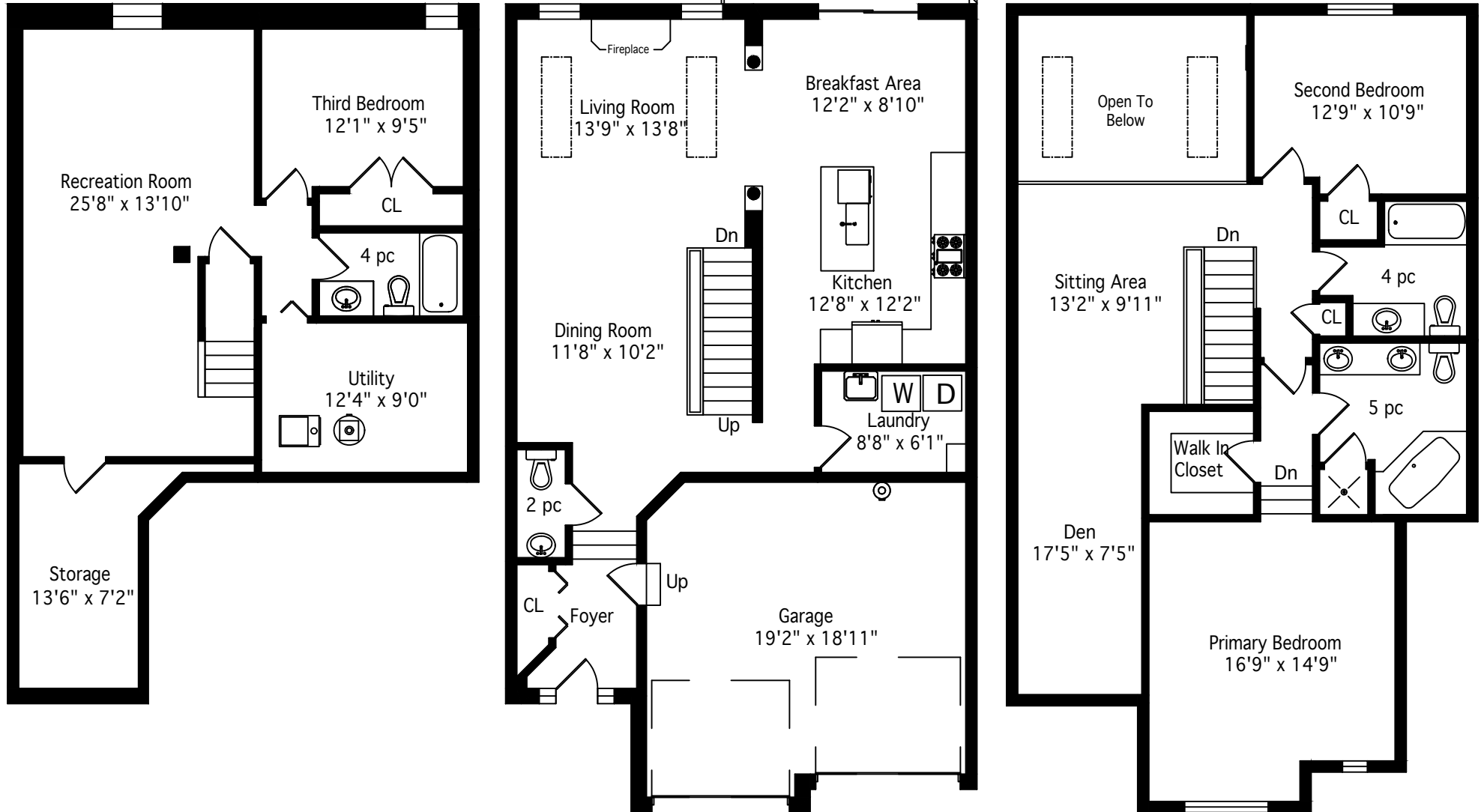


24-289 Plains Road W

1976 Square Feet

Total Including Basement - 2884 Square Feet



MICHAEL BREJNIK | SALES REPRESENTATIVE |
ROYAL LEPAGE BURLOAK REAL ESTATE SERVICES |
OFFICE: 905.335.3042

Measurements and Calculations are approximate. To be used as guidelines only