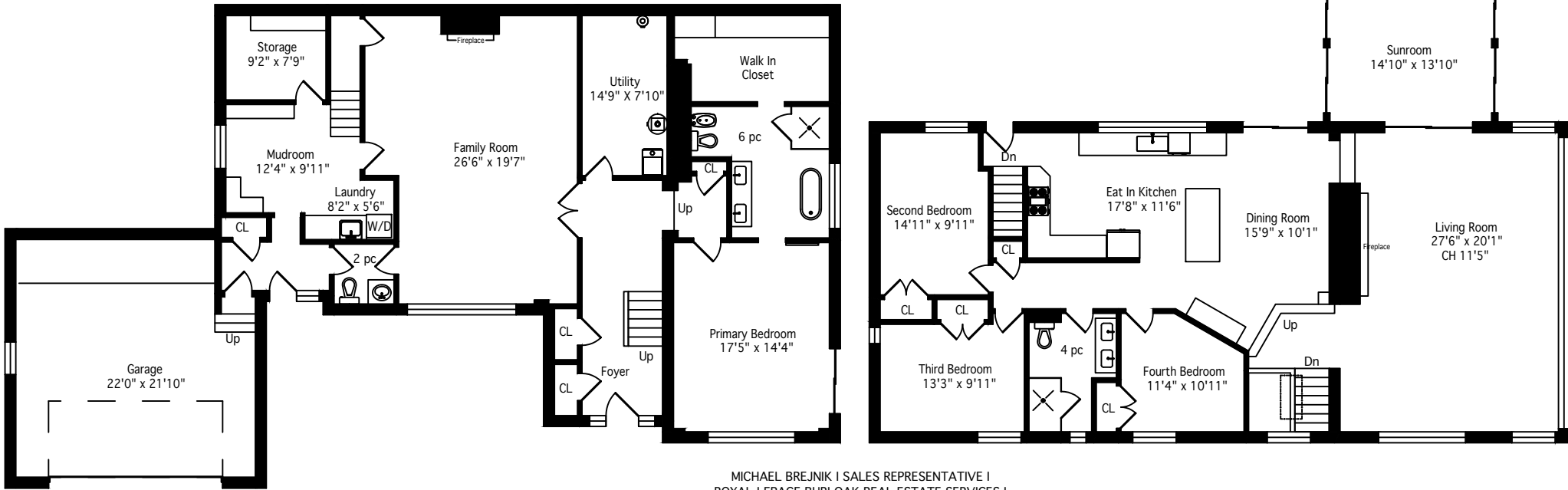


2365 Britannia Road

1929 Square Feet

Total Including Basement - 4059 Square Feet



MICHAEL BREJNIK | SALES REPRESENTATIVE I  
ROYAL LEPAGE BURLOAK REAL ESTATE SERVICES I  
OFFICE: 905.335.3042

Measurements and Calculations are approximate. To be used as guidelines only