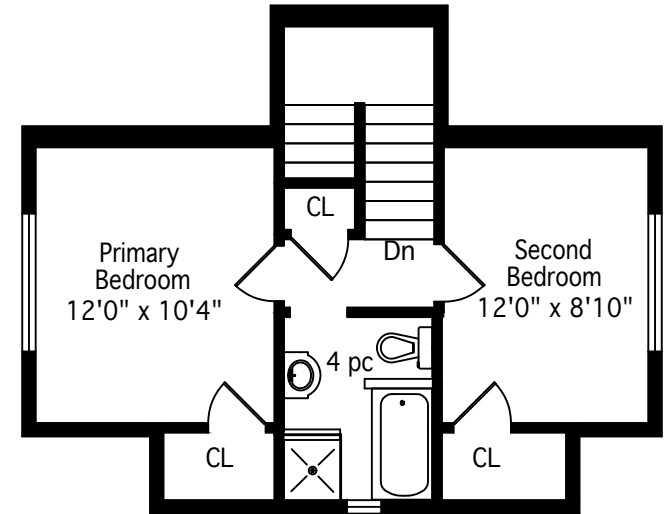
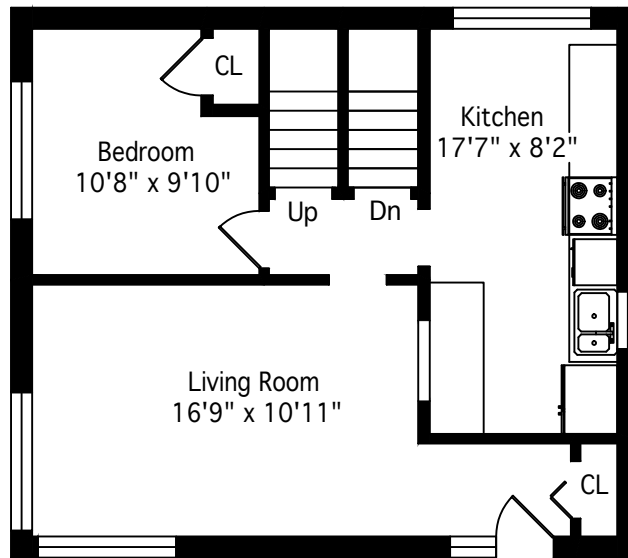
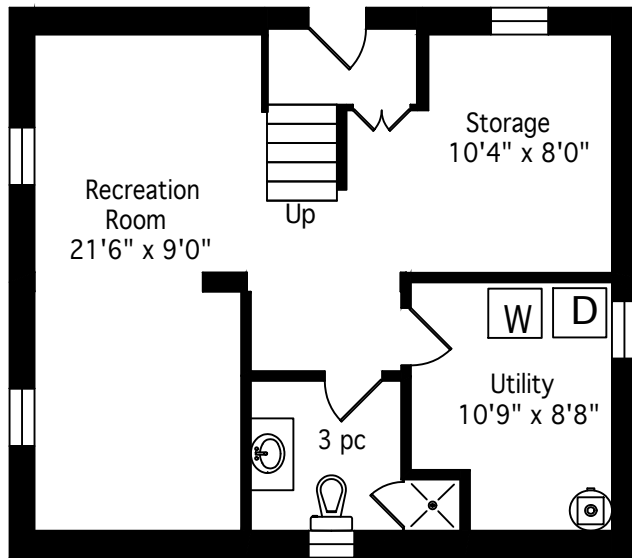


1452 Augustine Drive

1125 Square Feet

Total Including Basement - 1774 Square Feet



MICHAEL BREJNIK | SALES REPRESENTATIVE |
ROYAL LEPAGE BURLOAK REAL ESTATE SERVICES |
OFFICE: 905.335.3042

Measurements and Calculations are approximate. To be used as guidelines only